



**The Royal Star® Difference:**

★ On-Time Guarantee®  
60 Seats / 6

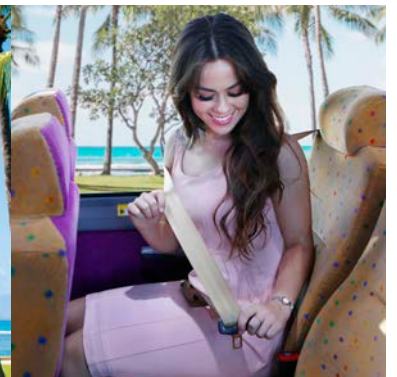
★ 100% Seat Belted & DriveCam-Equipped

★ 15-Minute Increment Charge  
58 Seats / 13



**Largest custom deluxe motorcoach fleet, all 5 years old or newer – our signature fleet**

- **Mint and hand towelette service and digital signage**
- **Onboard restroom with no charge for use**
- Large baggage bay and ample overhead storage
- Safety Systems: DriveCam, TPMS (Tire Pressure Monitoring System), ABS (Anti-Lock Braking System), ASC (Automatic Stability Control), Michelin® tires (no retread tires)
- Deluxe passenger comfort: Easy access with kneeling feature, air-conditioning, seat belt, panoramic window views, reclining seats, adjustable headrest / footrest and more
- Advanced audio / DVD video system with microphone and flat screens



**Vehicle & Most Advanced Technology**

- Dimensions: 45' long, 8.5' wide, 11'7" high
- Greener: Less carbon footprint than a car, plane or train!
- Better turning radius of 41' with articulating tag axle.
- Turbo charged 430 horsepower: with 1,200 foot lbs. of torque.
- 6 onboard computers: control engine, transmission, suspension, brakes, air-conditioning and tire monitoring.
- 6-Speed automatic transmission with quiet engine brakes.

**Operation Info & Other**

- Digital Signage: 48 hours notice, English only, maximum 32 characters.
- Baggage: 90 bags. Hand-carry bags are allowed inside the vehicle.
- **VT** Virtual Tour: [RoyalStarHawaii.com/virtualtour](http://RoyalStarHawaii.com/virtualtour)





Perfect Your Charter!  
Enjoy the island your way.

| CHARTER ENHANCEMENT   | SUGGESTED RETAIL PRICE              | DESCRIPTION  |   | IMAGE | REF. CODE |     |
|---|-------------------------------------|--|---|-------|-----------|-----|
| <b>Popular!</b><br><b>Orchid Lei</b><br>by Hula Dancer        | \$19.00<br>per person               | Welcome your group at the airport with an "Orchid Lei by Hula Dancer" greeting at the airport! Minimum 20 persons. Ask special price for over 100 persons.   |   |       | N/A       |     |
| <b>NEW!</b><br><b>Hawaiian Welcome</b><br>Lei, Hula & Ukulele | \$29.00<br>per person               | A Hawaiian experience upon arrival at the airport with hula dancer welcoming with a fresh flower lei and hula and ukulele player – a perfect photo opportunity! Minimum of 20 persons. Ask special price for over 100 persons. |   |       | N/A       |     |
| <b>NEW!</b><br><b>Ukulele</b>                                 | \$350.00<br>per player              | Welcome your group at the airport with ukulele.  |   |       | N/A       |     |
| <b>NEW!</b><br><b>Shell Lei</b><br>by Driver                  | \$10.00<br>per person               | Our driver will welcome you with a shell lei as soon as you arrive at our vehicle. A great start for a Hawaiian vacation! Minimum of 1 person.   |   |       | N/A       |     |
| <b>Cold Bottled Hawaiian Water</b>                            | \$3.50<br>per bottle                | Most requested enhancement. Great after a long flight! Minimum of 1 person.  |   |       | N/A       |     |
| <b>BAGGAGE / PORTERAGE</b>                                    | <b>Baggage</b><br>One-Way           | \$5.00<br>per person   | Baggage is loaded from curb to vehicle's baggage bay and also unloaded for your group.  |       | N/A       |     |
|   | <b>Porterage</b><br>One-Way         | \$5.00<br>per person   | Porterage is baggage transported from the airport carousel to the curb or from the curb to the airline check-in counter. (Domestic only)  |       |           |     |
| <b>DELUXE SERVICE</b>   | <b>Deluxe Gold</b><br>Service       | Complimentary  | Mint and hand towelette service is part of Deluxe Gold and Executive vehicle experience.  |       | N/A       |     |
|   | <b>Digital Signage</b>              | Complimentary  | Your group will surely be impressed to see "their name" in lights. 48 hour notice, English only, maximum of 32 characters.  |       | N/A       |     |
|   | <b>NEW!</b><br><b>Magnetic Sign</b> | \$320.00<br>(Set of 2)   | We can make magnetic signs in full color. Front: 35"x10" and Side: 35"x14". Provide a vector file 10 business days in advance. Inquire for handling details and charge if you would like to bring your own magnetic sign. |       |           | N/A |
| <b>GUIDE</b>  | <b>Driver Guide</b>                 | \$10.00<br>per hour<br>additional  | Our professional drivers are specially trained to give narrated tours; English or Japanese.   |       | N/A       |     |
|   | <b>Guide</b>                        | Upon request   | We can also arrange a guide for you.  |       |           |     |
| <b>TOURS</b>  | <b>Tours &amp; Activities</b>       | Ask  | We can arrange dinners and activities just for you: from Star of Honolulu® dinner and whale watching cruises, Dolphin Star® dolphin watching and snorkel cruises to Rock-A-Hula® luau in Waikiki!                         |       |           | N/A |

1) Prices are per person, unless otherwise stated.

2) Above prices include applicable taxes. Price and contents subject to change.

3) Confirmation, cancellation terms varies by enhancements. Please inquire.

4) Water fee is \$100.00 if you bring your own bottled water.

